



ELECTRIC CHARACTERISTICS

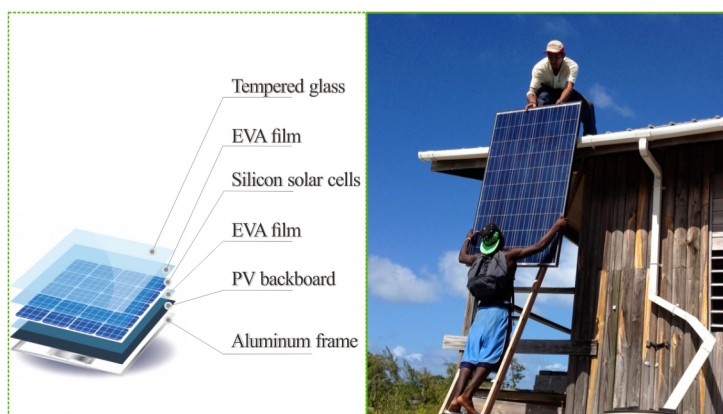
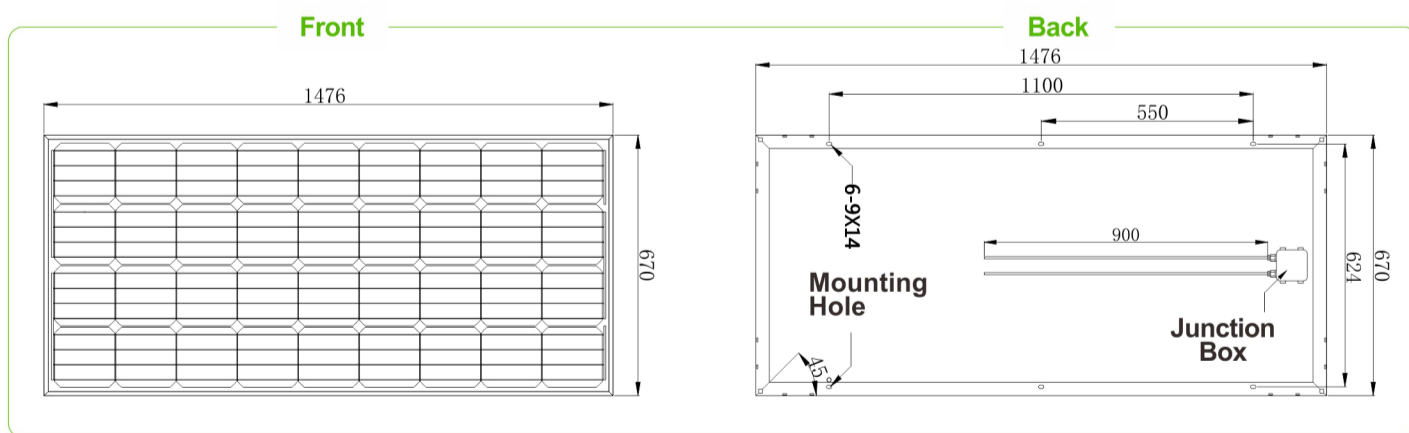
Model NO.	B6MY16018L001	B6MY17018L001
Max. Power (Pmax)	160	170
Max. Power Voltage (Vmp)	18.3	18.8
Max. Power Current (Imp)	8.75	9.05
Open Circuit Voltage (Voc)	22.5	22.9
Short Circuit Current (Isc)	9.31	9.44

SPECIFICATION

Model NO.	B6MY16018L001	B6MY17018L001
Cell Type	MONO	MONO
Dimension (mm)	1476*670*35	1476*670*35
Cable Length (mm)	900	900
Type of Connector	None/MC4	None/MC4
Weight (kg)	11.25	11.25

B6MY16018L001

B6MY17018L001



- High energy conversion rate
- Customized design
- Green energy
- 25 years lifetime

